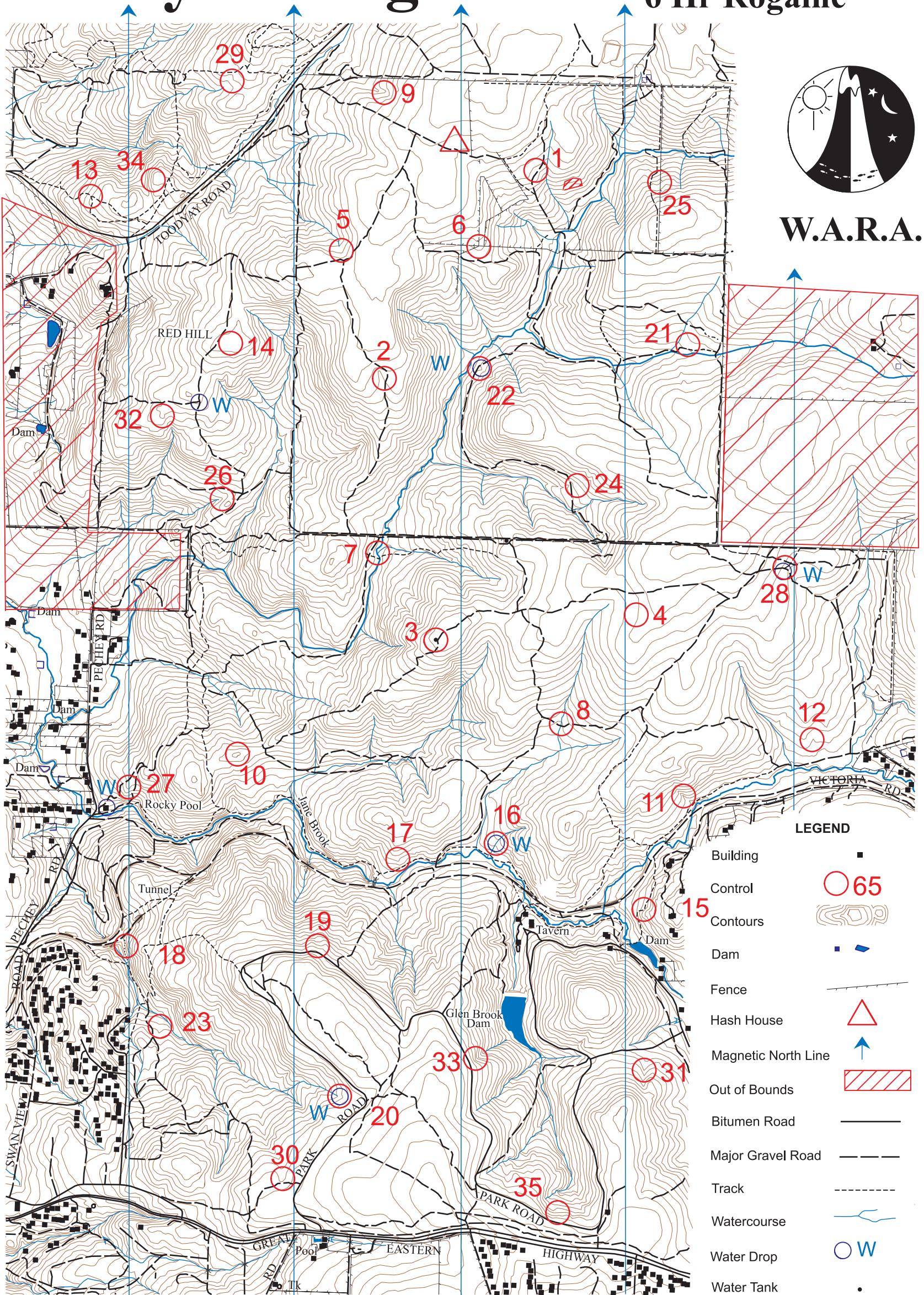


Rocky's Delight

Saturday 27th March 1999
6 Hr Rogaine



W.A.R.A.



SETTERS AND VETTERS

Rob West Phil Duffy
Lois West Penny Duffy



SCALE 1:25,000 Contour interval 5 metres

When using John Forrest National Park
Please protect the Park's flora and fauna by
using tracks whenever it is possible.

ROCKY'S DELIGHT 6 HOUR ROGAINE - MARCH 27, 1999

No.	Description	Points
1.	A mound in a gravel pit - 20 m from track	10
2.	A Southern earth mound between the track and the gully	10
3.	The water tank - West side	10
4.	A clearing 80 x 50 - Southern edge	10
5.	The head of the watercourse	20
6.	The fence corner	20
7.	The watercourse junction	20
8.	The track/watercourse crossing - North side	20
9.	The gully	30
10.	The summit	30
11.	The gully	30
12.	The gully - Western edge of bare rock	30
13.	The track junction then 20 m North	40
14.	The broad summit	40
15.	The track bend (overgrown)	40
16.	In the watercourse - head of an erosion gully	40
17.	The spur - N. side of a bare rock surface 50 x 20 m	50
18.	Between a 4 m boulder and a 15 m cliff/rock surface	50
19.	The shallow gully	50
20.	Head of the watercourse	50
21.	East side of a 2 m boulder	60
22.	East side of the gully/track crossing	60
23.	The gully - above a rock wall	60
24.	A shallow pit	60
25.	The fence - middle of a clearing 20 x 20m	70
26.	The head of the watercourse	70
27.	The spur	70
28.	The South West track junction - North side	70
29.	Southern edge of a 50 x 20 m clearing	80
30.	Head of the gully - in a pit	80
31.	The gully	80
32.	A bare rock knoll 30 x 40 m - middle	90
33.	The gully	90
34.	The summit - West side	100
35.	North side of a 2 m boulder cluster	100

Moonrise 3.20pm Sunset 6.20pm TOTAL POINTS: 1740